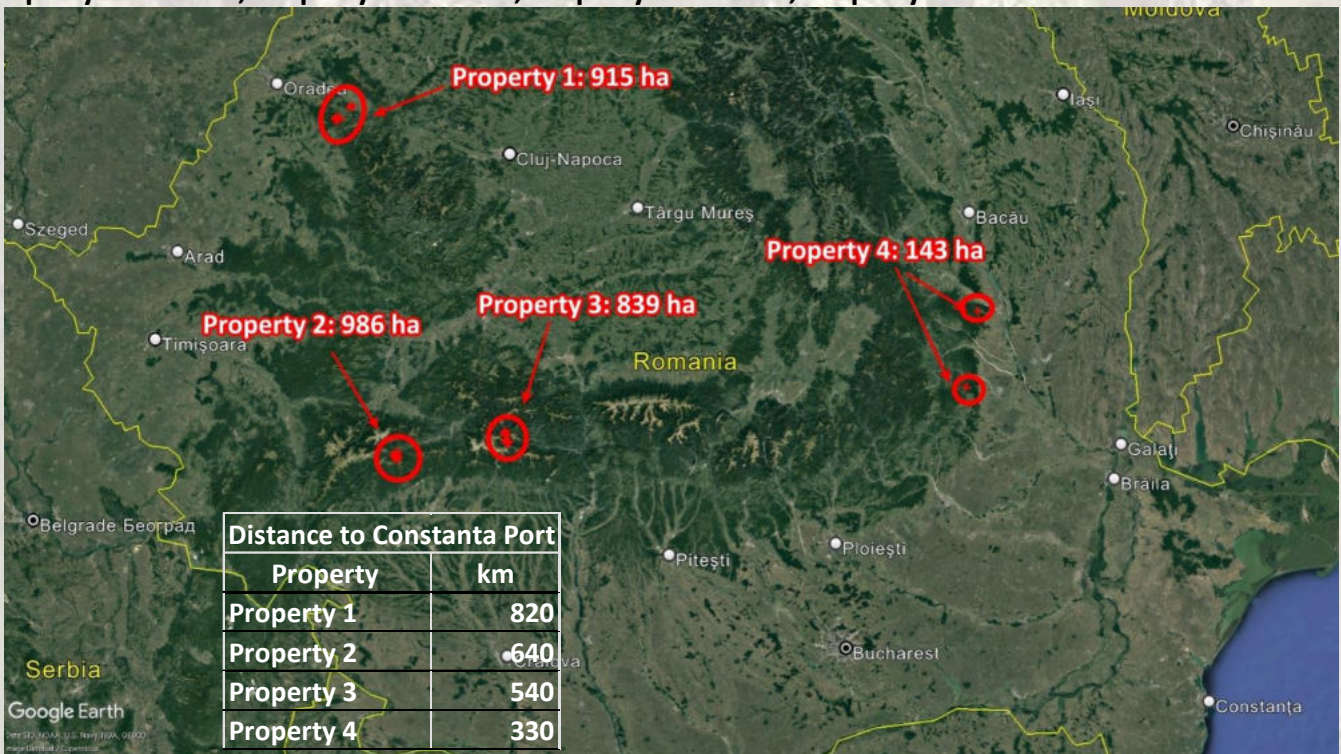


# Teaser

**2,883 ha forest land**

**Investment object:**

Investment object: 2,883 hectares of prime quality forest land located in four different areas:  
 Property 1 – 915 ha; Property 2 – 986 ha; Property 3 – 839 ha, Property 4 – 143 ha.



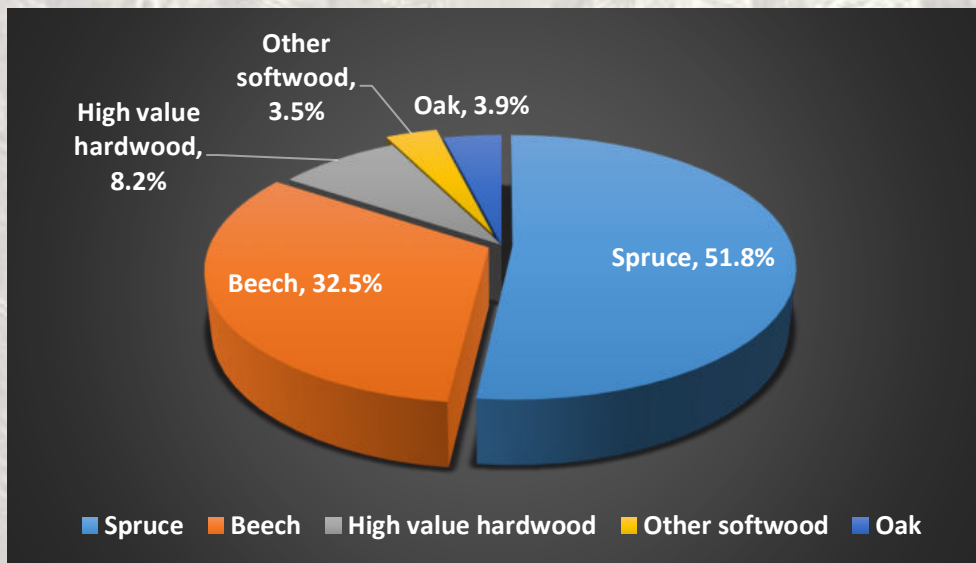
**Transaction type:** package asset deal

**Key investment highlights:**

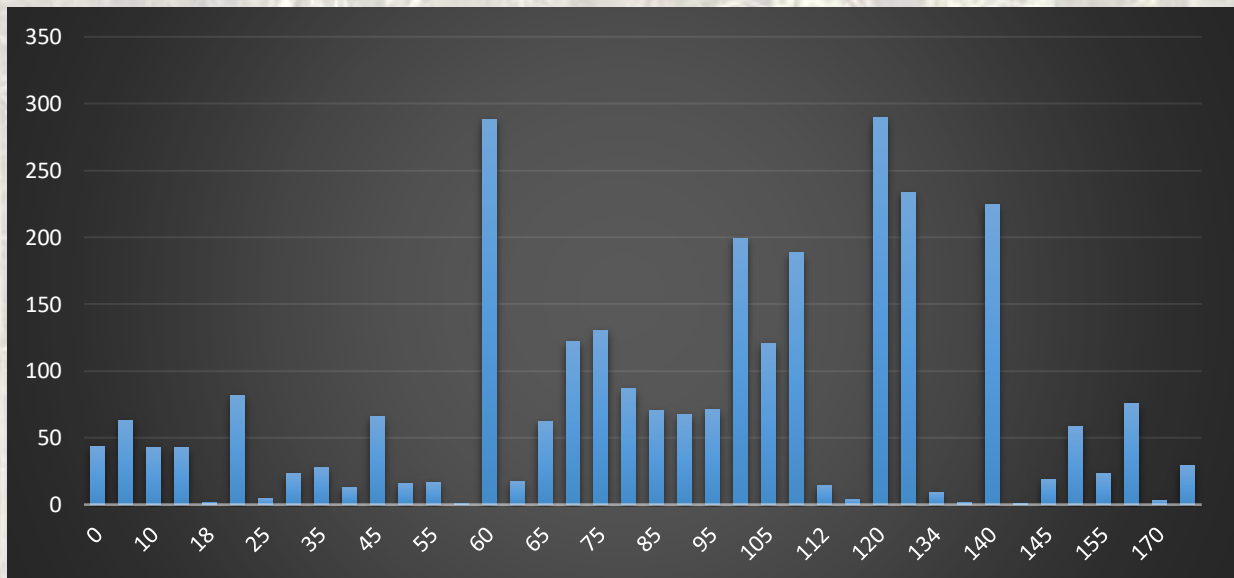
- All forest lands are officially registered in the National land book with clear ownership titles and no claim or legal disputes.
- The entire surface benefits of good access infrastructure and the inland forestry roads ensure good harvesting conditions.
- Balanced age structure with high operational harvesting potential but also for carbon offset credits & biodiversity projects.
- Timber processing facilities located in the relevant areas for the forest lands of the entire portfolio.
- Solid local firewood market in the regions where the forest lands are located.
- All four properties were managed during the last years exclusively and sustainably by Romania’s largest and most professional private forest manager

## Forestry data for 2,883 ha:

### Tree Species Distribution



### Age structure



**Total Standing Forest Inventory (SFI) = 1 300 233 m<sup>3</sup>**

**Average SFI = 451 m<sup>3</sup>/ha**

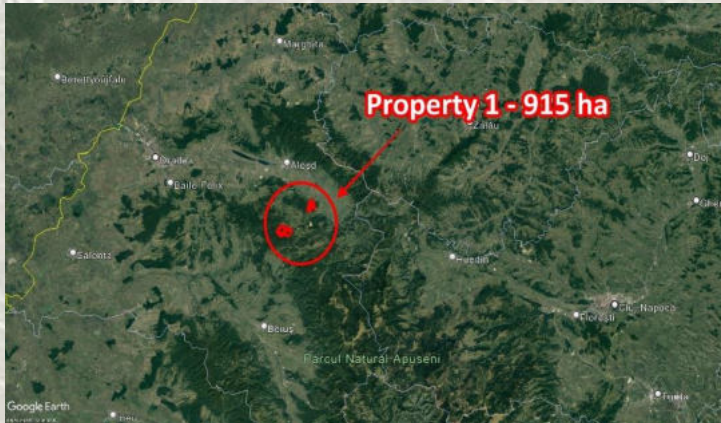
**Biological Growth = 8.5 m<sup>3</sup>/ha/year**

**Annual allowable cut (AAC) = 6.5 m<sup>3</sup>/ha/year**

**Forest Management Plan (FMP) = property specific**

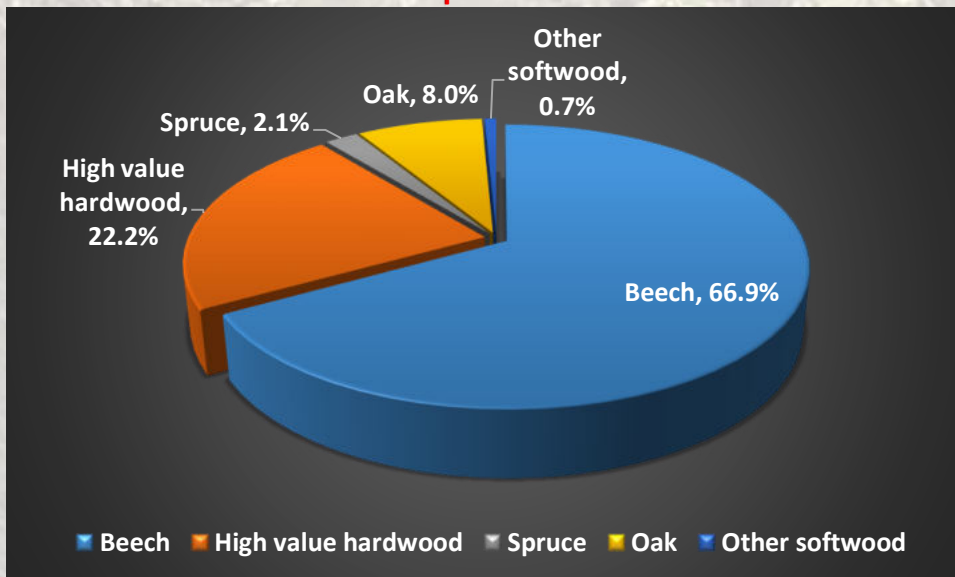
## ➤ Property 1 – 915 ha

### Location:

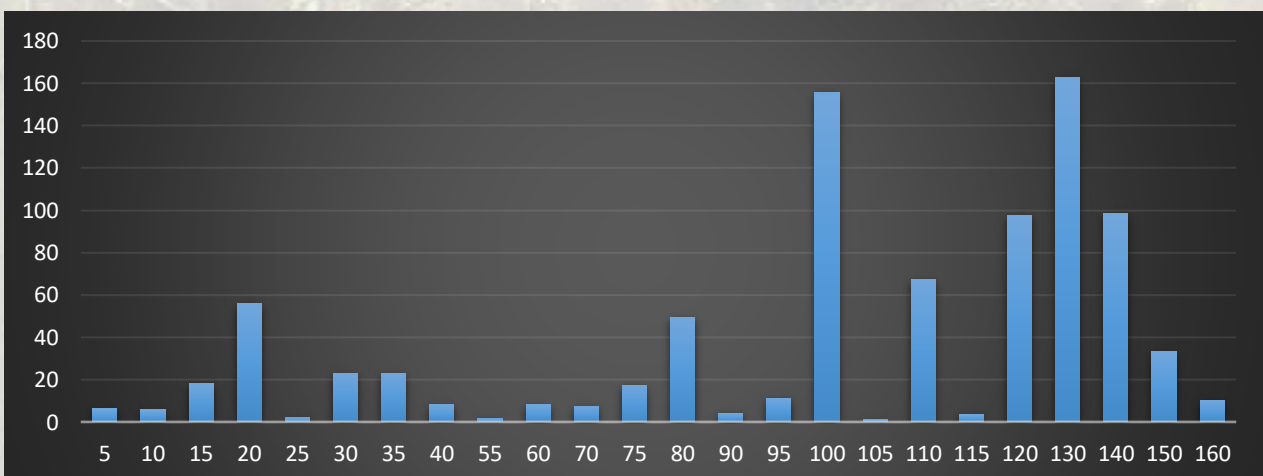


### Forestry data:

#### Tree Species Distribution



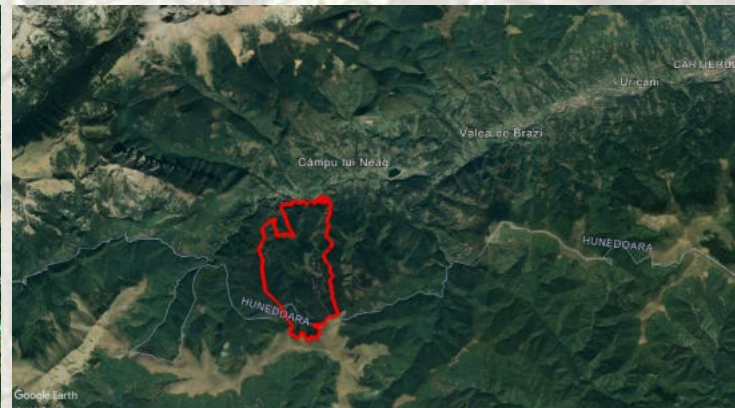
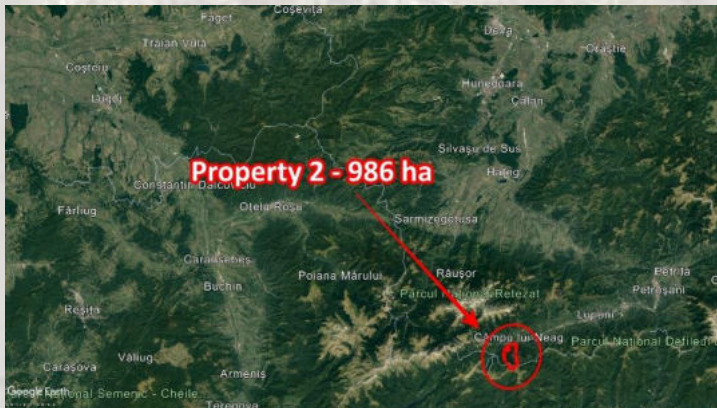
#### Age Structure



**AAC – 5 m<sup>3</sup>/ha/year; SFI – 398.5 m<sup>3</sup>/ha; SFI – 398.5 m<sup>3</sup>/ha; Growth: 6.75 m<sup>3</sup>/ha/year; FMP validity: until 2024**

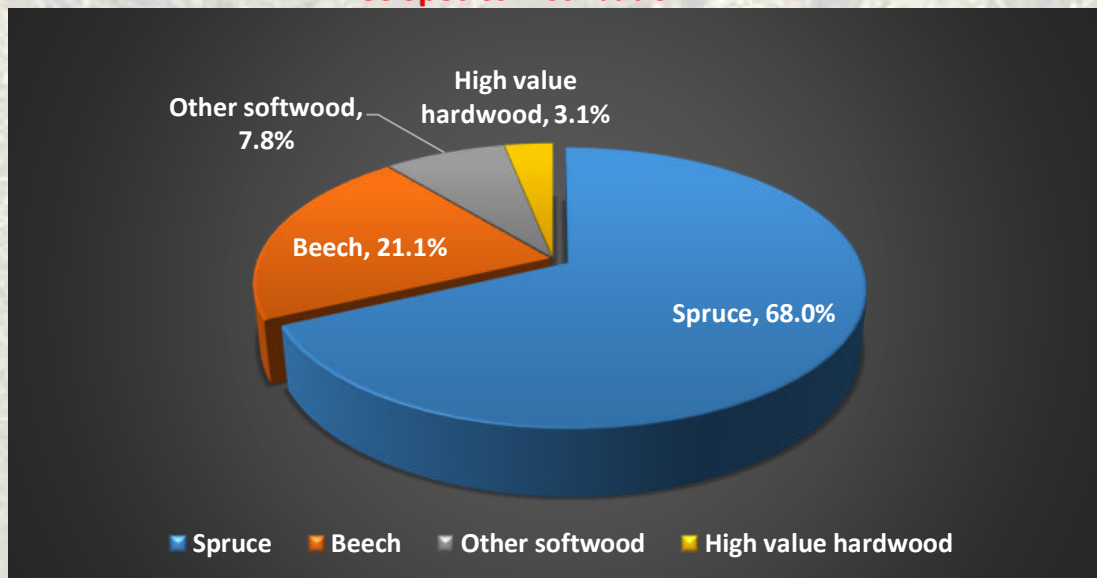
## ➤ Property 2 – 986 ha

### Location:

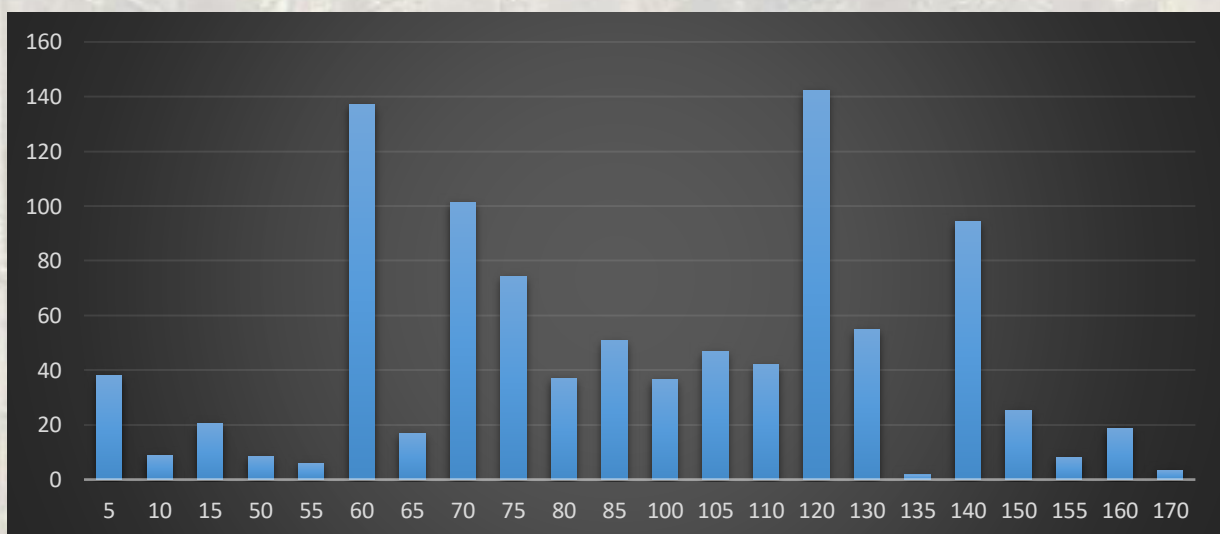


### Forestry data:

#### Tree Species Distribution



#### Age Structure



**AAC – 8.4 m<sup>3</sup>/ha/year; SFI – 486 m<sup>3</sup>/ha; Growth: 8.2 m<sup>3</sup>/ha/year ; FMP validity: until 2033**

**GreenGold Management**

C-tin Noica Street, no 24, RO - 550169 Sibiu, Romania

[www.greengold.ro](http://www.greengold.ro)

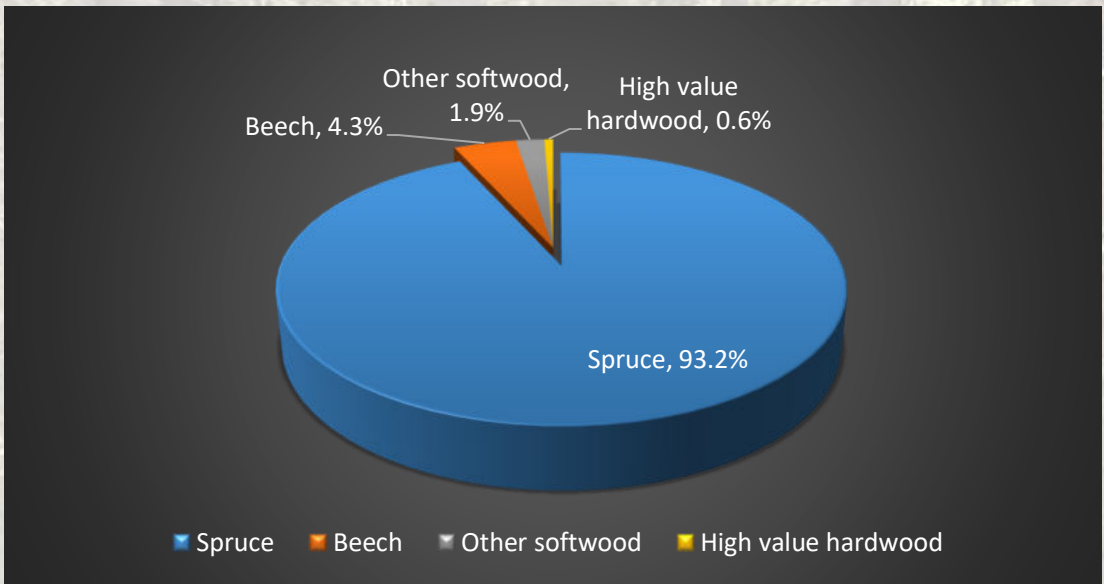
## ➤ Property 3 – 839 ha

Location:

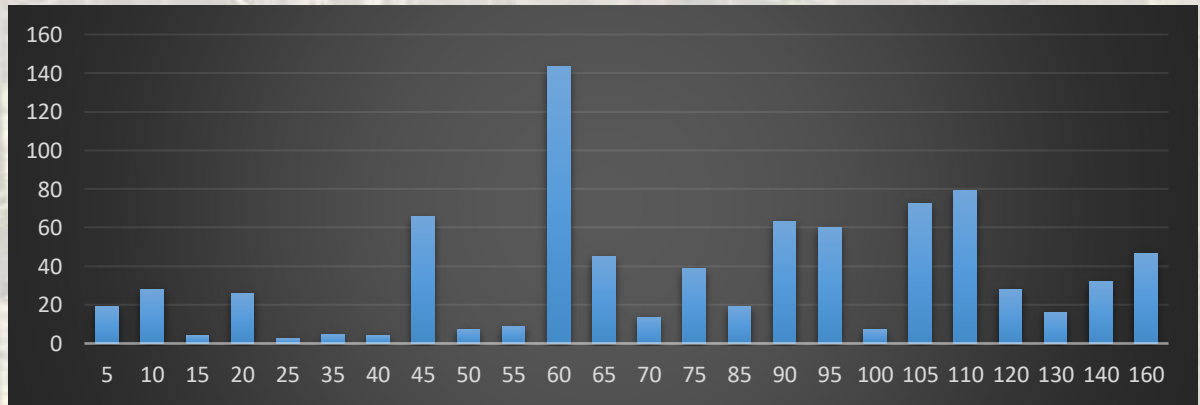


## Forestry data:

### Tree Species Distribution



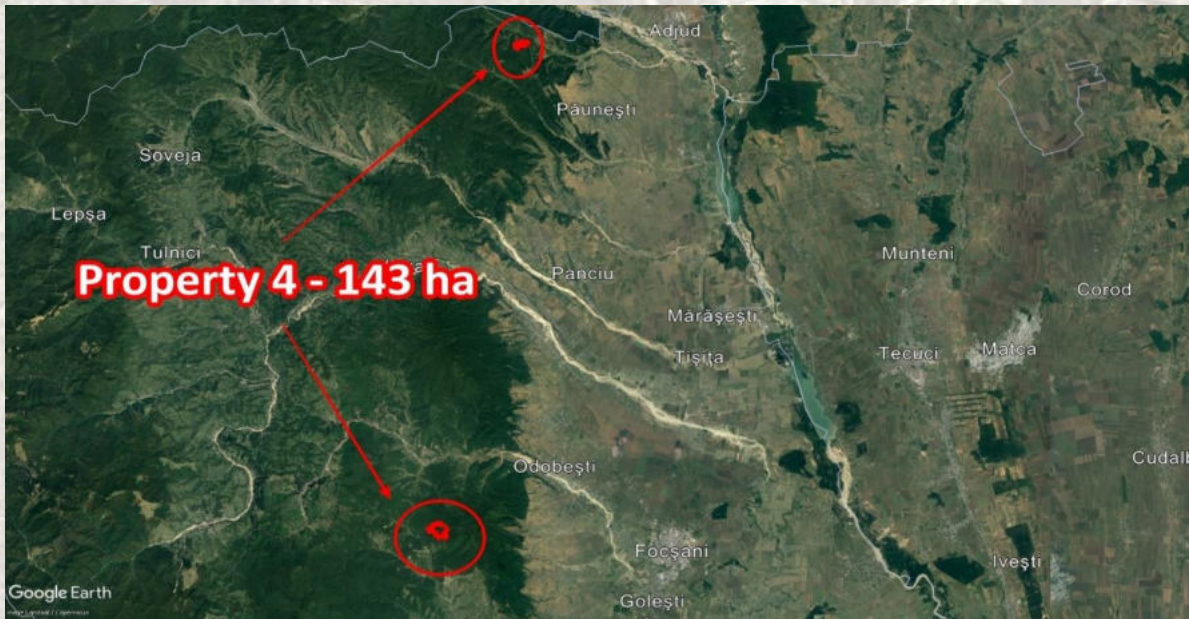
### Age Structure



**AAC – 6.92 m<sup>3</sup>/ha/year; SFI – 476 m<sup>3</sup>/ha; Growth: 11 m<sup>3</sup>/ha/year; FMP validity: until 2029**

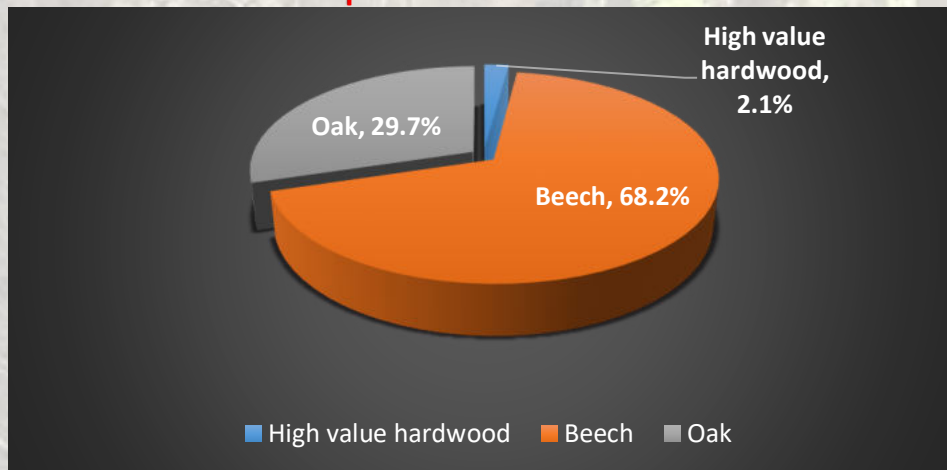
## ➤ Property 4 – 143 ha

Location:

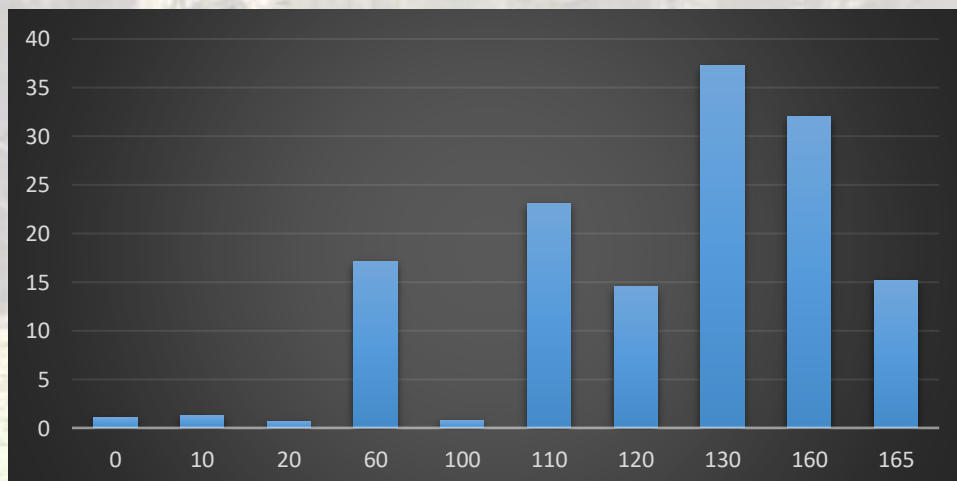


Forestry data:

### Tree Species Distribution



### Age Structure



GreenGold Management

C-tin Noica Street, no 24, RO - 550169 Sibiu, Romania

[www.greengold.ro](http://www.greengold.ro)

**AAC – 6 m<sup>3</sup>/ha/year**

**SFI – ca. 500 m<sup>3</sup>/ha**

**Growth: 7 m<sup>3</sup>/ha/year**

**FMP validity: work undergoing**